

# THE GREEN LANE POST

Official Newsletter of the  
Green Lane Animal Hospital



## Christmas Caution

Dr Herzog (AKA Santa Claus) says  
*"You better watch out... for these  
common toxins at Christmas!"*

- **Holiday foods:** The big offenders are Chocolate, Grapes, Raisins, Xylitol-based Gum/Candy, and Alcohol! All of these are highly toxic to dogs and cats. If your pet ingests these, seek immediate veterinary care.
- **Tinsel** - Cats love tinsel! But when ingested it acts as a foreign body, which can create a blockage and a real emergency.
- **Plants** - Lillies are highly toxic to cats. A single bite can result in kidney failure!



## Holiday Hours

FRIDAY DECEMBER 24-MONDAY  
DECEMBER 27: CLOSED

TUESDAY DECEMBER 28: BACK TO  
REGULAR HOURS 8AM-8PM

FRIDAY DECEMBER 31-JANUARY 2:  
CLOSED

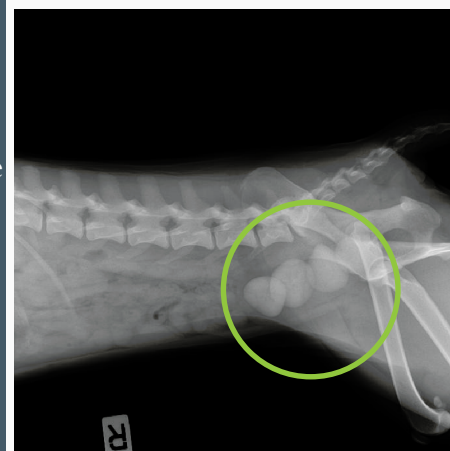
MONDAY JANUARY 3: BACK TO  
REGULAR HOURS 8AM-6PM

## To Pee or Not To Pee

When this four year old female dog started to have blood in her urine, her owners knew something was wrong. She began to strain, and only small drops of pee would come out.

She came in for an exam with Dr Seidman, and he knew to quickly take x-rays of her bladder. As you can see from the image on the right, this dog had several large stones that formed in her bladder, causing her pain and bleeding.

Dr Cooper went to surgery right away to remove the stones and relieve the discomfort. After surgery, this dog was placed on a preventative food (Hill's C/D) to help avoid bladder stones forming again.



## DID YOU KNOW?

Allergies are the most common cause of recurrent ear infections! An estimated 45% of ear infections in dogs are associated with food or environmental allergies. If your pup seems to keep coming down with ear infections several times a year, talk to your veterinarian about a diet trial to help fight back!